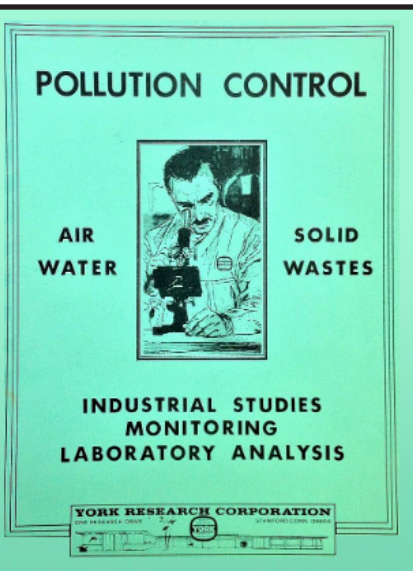


The Analytical Laboratory of Choice in Northeast U.S.



part of
ALS Limited

**Comprehensive Air, Water and Soil Analyses
with Unmatched PFAS Expertise.**



Statement of Qualifications

Connecticut Dept. of Health

License # PH-0723
and PH-0721

New York State Dept. of Health

License Numbers
10854 and 12058



New Jersey Dept. of Environmental Protection

License # CT-005 and NY-037

Pennsylvania Dept. of Environmental Protection

License # 68-04440

800-306-YORK | 203-325-1371

www.YorkLab.com • ClientServices@YorkLab.com

Innovation. Vision. Dedication.

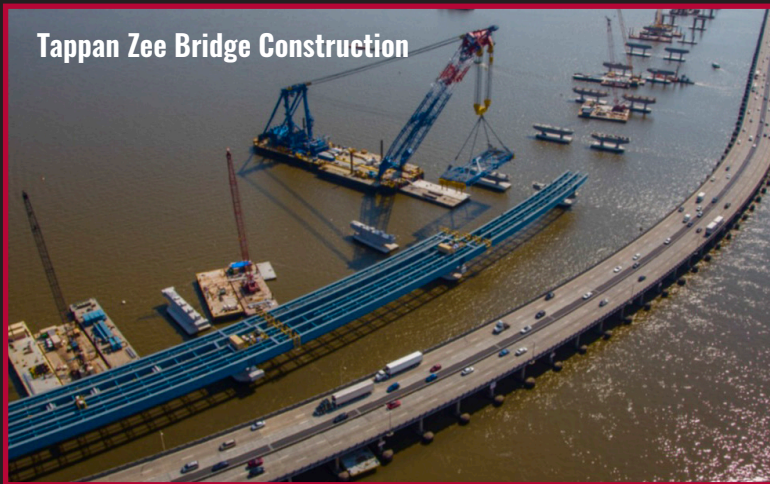
The York Analytical Legacy

York Analytical has been at the forefront of environmental analysis throughout the Greater New York region since the early 1980s, with roots in air monitoring that predate the U.S. Environmental Protection Agency. Independent and owner-operated, York has been the environmental laboratory of choice for major infrastructure and complex commercial projects for more than three decades.

York's senior scientific and technical experts have long recognized upcoming environmental issues, adapted quickly to new guidelines and regulations, and innovated new methodologies and testing that are industry standards.

York empowers clients to better serve their customers with project planning insights, expert technical responsiveness, fast turnaround times and rush services.

We provide the entire continuum of expert testing and analysis of air, wastewater, drinking water, stormwater, soil, solids, and hazardous waste for volatiles, semi-volatiles, pesticides, herbicides, PFAS, PCBs, metals and other environmental regulated parameters.



Tappan Zee Bridge Construction



Air Analysis



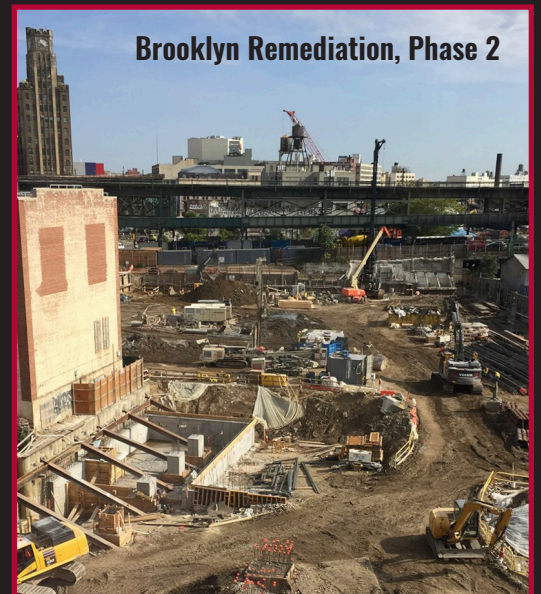
Water Analysis



Soil Analysis

In 2019, York Analytical opened NYC's first and only PFAS laboratory to analyze PFAS in soil, groundwater, wastewater and drinking water. In January 2023, York added a second PFAS laboratory to handle the demand for advanced PFAS testing and analysis in the tri-state region.

In 2024, York Analytical was acquired by the global testing solutions company, ALS Limited, to accelerate its growth in Northeast U.S., particularly in the essential PFAS testing business.

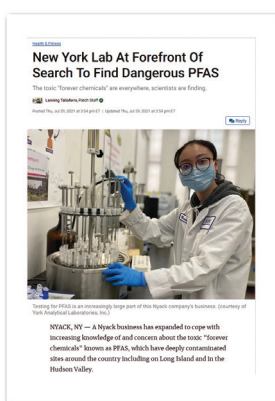


Brooklyn Remediation, Phase 2

Unmatched PFAS Expertise

In 2017, York Analytical began managing PFAS sample analysis for a number of soil investigations for PFAS (including a 150-sample project at a NYC-area airport). This work anticipated the need for stringent PFAS testing levels and compliance, so York opened NYC's first dedicated PFAS laboratory in Queens, NY in 2019.

York has continued to build its legacy as the premiere laboratory for PFAS analysis and technical guidance by investing in new instrumentation, adding laboratory facilities and PFAS licensing in six northeast states. In March 2024, YORK joined global testing solutions company, ALS Limited, pioneers of PFAS testing, with one of the largest PFAS testing laboratory networks in the world. This will enable YORK to scale up in anticipation of new regulations and standardize best practices through a globally unrivaled network of PFAS.



See PFAS
Methods
& Testing



Comprehensive Drinking Water Testing

[DrinkingWaterTesting.com](https://www.DrinkingWaterTesting.com)

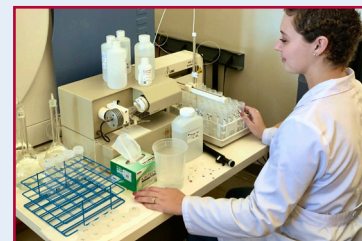
You Need to Know
What's in Your H₂O

"WHAT'S REALLY
IN MY WATER?"



Every week, new reports detail the extent of widespread contamination in our drinking water from PFAS ("forever chemicals"). To address the growing crisis, York offers comprehensive drinking water testing services in Connecticut, New York, New Jersey, Pennsylvania and soon nationally.

York provides fast, expert testing and analysis of drinking water supplies from every source - for homeowners, schools/day cares, businesses, communities, hotels and non-profits.



Visit [DrinkingWaterTesting.com](https://www.DrinkingWaterTesting.com) to order drinking water test kits for your needs; contact our experts about your water quality questions.

Comprehensive Testing Solutions

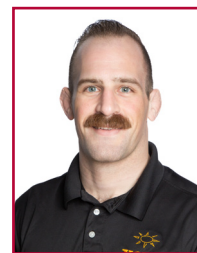
ORGANICS

VOC	SVOC	Pesticides	PCB	THP	Herbicides	Emerging Contaminants				
8260 <ul style="list-style-type: none"> • Std 8260 • CT RCP • CP-51 (STARS) • TCL • NJDEP • Part 375 • TCLP RCRA • Suffolk Co. • Nassau Co. • Site Specific 	8270 <ul style="list-style-type: none"> • Std 8270 • CT RCP • CP-51 (STARS) • TCL • NJDEP • Part 375 • TCLP RCRA • Suffolk Co. • Nassau Co. • Site Specific 	8081 <ul style="list-style-type: none"> • Std 8081 • CT RCP • TCLP RCRA • TCL • NJ DEP • Part 375 8141 <ul style="list-style-type: none"> • Std 8141 	8082 <ul style="list-style-type: none"> • Std 8082 608 <ul style="list-style-type: none"> • Std 608 680 (Homologs)	8015 GRO <ul style="list-style-type: none"> • Std 8151 8015 DRO <ul style="list-style-type: none"> • CT RCP • Part 375 State Specific <ul style="list-style-type: none"> • CT ETPH • NJ EPH • NJ QAM • NY 310-13 	8151 <ul style="list-style-type: none"> • Std 8151 • CT RCP • Part 375 	PFAS <ul style="list-style-type: none"> • Potable Water • 537.1 • 533 PFAS <ul style="list-style-type: none"> • Non-Potable Water/Soil • 1633 • 537m 8270 SIM <ul style="list-style-type: none"> • 1, 4-dioxane 				
624 <ul style="list-style-type: none"> • Std 624 • TCL • NYC DEP sewer • NYC DEC discharge 	625 <ul style="list-style-type: none"> • Std 625 • TCL • NYC DEP sewer • NYC DEC discharge • Site Specific 	608 <ul style="list-style-type: none"> • Std 608 	<div style="border: 1px solid black; padding: 10px; background-color: #fff9c4;"> <h3 style="text-align: center; margin: 0;">INORGANICS</h3> <table border="1" style="width: 100%; border-collapse: collapse;"> <thead> <tr> <th style="background-color: #e91e63; color: white;">METALS</th> <th style="background-color: #e91e63; color: white;">WET CHEM</th> </tr> </thead> <tbody> <tr> <td> 6010/6020 <ul style="list-style-type: none"> • CT RCP 15 • TCLP RCRA • TAL • NJ DEP • PP 13 • Individ. metals • Suffolk Co. • Nassau Co. • Site Specific • NO2 </td> <td> Minerals <ul style="list-style-type: none"> • K • Ca • Mg • Na • Cl • SO₄ Nutrients <ul style="list-style-type: none"> • NO₃ • NO₂ • P • NH₄ • TKN Physical <ul style="list-style-type: none"> • Color • Odor • Turbidity • pH Other <ul style="list-style-type: none"> • Ignitability • Flash Point • O+G • BOD • COD • Cyanide • Sulfide </td> </tr> </tbody> </table> </div>				METALS	WET CHEM	6010/6020 <ul style="list-style-type: none"> • CT RCP 15 • TCLP RCRA • TAL • NJ DEP • PP 13 • Individ. metals • Suffolk Co. • Nassau Co. • Site Specific • NO2 	Minerals <ul style="list-style-type: none"> • K • Ca • Mg • Na • Cl • SO₄ Nutrients <ul style="list-style-type: none"> • NO₃ • NO₂ • P • NH₄ • TKN Physical <ul style="list-style-type: none"> • Color • Odor • Turbidity • pH Other <ul style="list-style-type: none"> • Ignitability • Flash Point • O+G • BOD • COD • Cyanide • Sulfide
METALS	WET CHEM									
6010/6020 <ul style="list-style-type: none"> • CT RCP 15 • TCLP RCRA • TAL • NJ DEP • PP 13 • Individ. metals • Suffolk Co. • Nassau Co. • Site Specific • NO2 	Minerals <ul style="list-style-type: none"> • K • Ca • Mg • Na • Cl • SO₄ Nutrients <ul style="list-style-type: none"> • NO₃ • NO₂ • P • NH₄ • TKN Physical <ul style="list-style-type: none"> • Color • Odor • Turbidity • pH Other <ul style="list-style-type: none"> • Ignitability • Flash Point • O+G • BOD • COD • Cyanide • Sulfide 									
TO-15 <ul style="list-style-type: none"> • Std TO-15 • CT RCP • NJ DEP • Site Specific 	ANALYTICAL PACKAGES <ul style="list-style-type: none"> Disposal <ul style="list-style-type: none"> • Full TCLP • Full RCRA Haz Waste Characterization • Facility Specific Remedial Activities <ul style="list-style-type: none"> • Full Part 375 • Full NJ DEP • TCL/TAL • Full CT RCP Landfill <ul style="list-style-type: none"> • Part 360 <ul style="list-style-type: none"> • Routine • Baseline • Expanded Drinking Water Source <ul style="list-style-type: none"> • Subpart 5 SPDES <ul style="list-style-type: none"> • NYC DEP Discharge • NYS DEC Discharge 									
524 <ul style="list-style-type: none"> • Std 524.2 • Std 502.2 										

Exceptional Client Services



The experienced and dedicated Client Services staff, Project Managers and “York Force” Courier team provides best-in-the-industry customer service technical responsiveness and extensive support for field service teams.



Your Greatest Resource is Our Customer Service

- Eight (8) Laboratories & Client Service Facilities
- Largest Dedicated PFAS Laboratory in the Region
- Expert Senior Staff & Technical Resources
- Exceptional Client Services & Courier Teams
- Fast Turnaround Times & Rush Service



Laboratories and Service Facilities in the Region

By consistently investing in resources, equipment and staff, York has expanded aggressively to become the environmental laboratory of choice in NY, CT and NJ.

CONNECTICUT LABORATORY

120 Research Drive
Stratford, CT 06615

BOTTLE & RECEIVING CENTER

300 Long Beach Boulevard
Suite 11
Stratford, CT 06615

LABORATORY

56 Church Hill Road, Suite 2
Newtown, CT 06470

NEW YORK LABORATORY

132-02 89th Avenue
Richmond Hill, NY 11418

CORPORATE HQ

50 Gedney Street
Nyack, NY 10960

CLIENT SERVICE CENTER

163 Bridge Road, Suite 102
Islandia, NY 11749

NEW JERSEY

CLIENT SERVICE CENTER

94 Planten Avenue
Prospect Park, NJ 07508

LABORATORY

2161 Whitesville Road
Toms River, NJ 08755

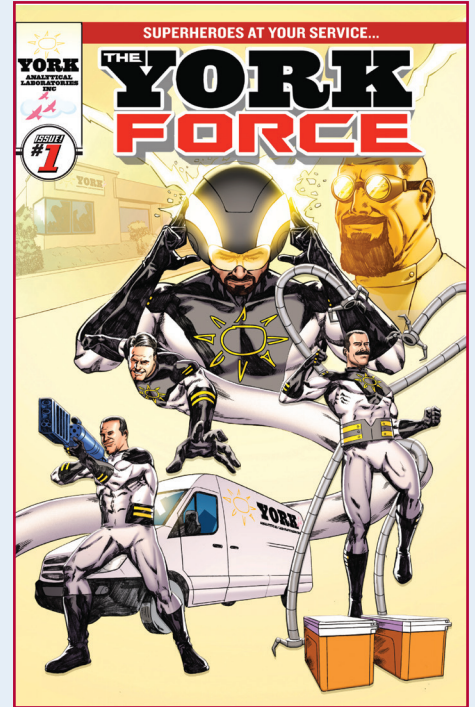
York Talk Videos & Blogs



ALS Limited Acquires York
CEO Shares Client Benefits



3 Ways to Get the Greatest
Value from Your Laboratory



The York Force
Comic Book



Why YORK?
Client Service Comes First



York Strives for Fastest
TAT in the Industry

Careers at York Analytical Laboratories



York Analytical continues to expand as the environmental testing laboratory of choice for the Greater NY region, and has intern partnerships with Rockland County Community College, Southern Connecticut State, and York College (CUNY).



Visit
Our Website

Chain of Custodies
& Sampling Instructions



Client Services & Technical Support On Call

800-306-YORK | 203-325-1371

www.YorkLab.com • ClientServices@YorkLab.com